

Portable Elemental Analyzer MH-6000A

(Plasma Emission, **for Solution**, Desktop, Flow Injection)

- **No gas, No duct** needed! We can use this **without duct**.
- **Stability, sensitivity** and **accuracy** improvement with flow
- **Labor-saving** of rinsing inside and exchanging sample
- Analysis of **alkaline solution** and **silicon** with sapphire cell
- Satisfaction **range** and **resolution** with two spectrometers

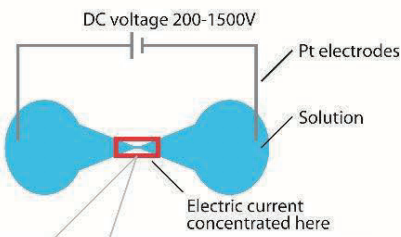


Portable elemental analyzer MH-6000A

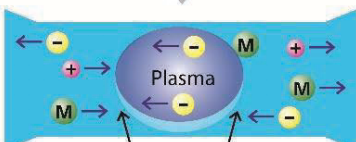


A connection sample of MH-6000A and pump

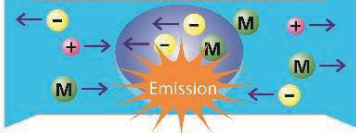
Liquid electrode plasma



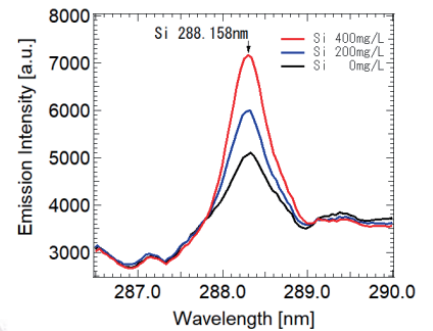
Solution is locally heated and evaporated.



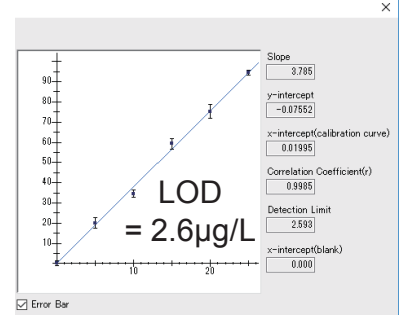
Impurities in solution are sputtered into plasma and specific spectra.



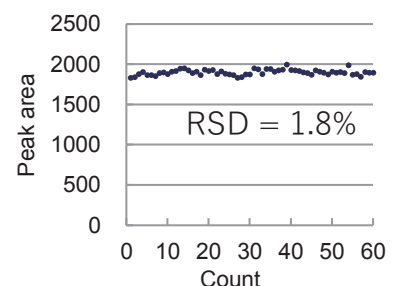
Principle of LEP: Liquid Electrode Plasma



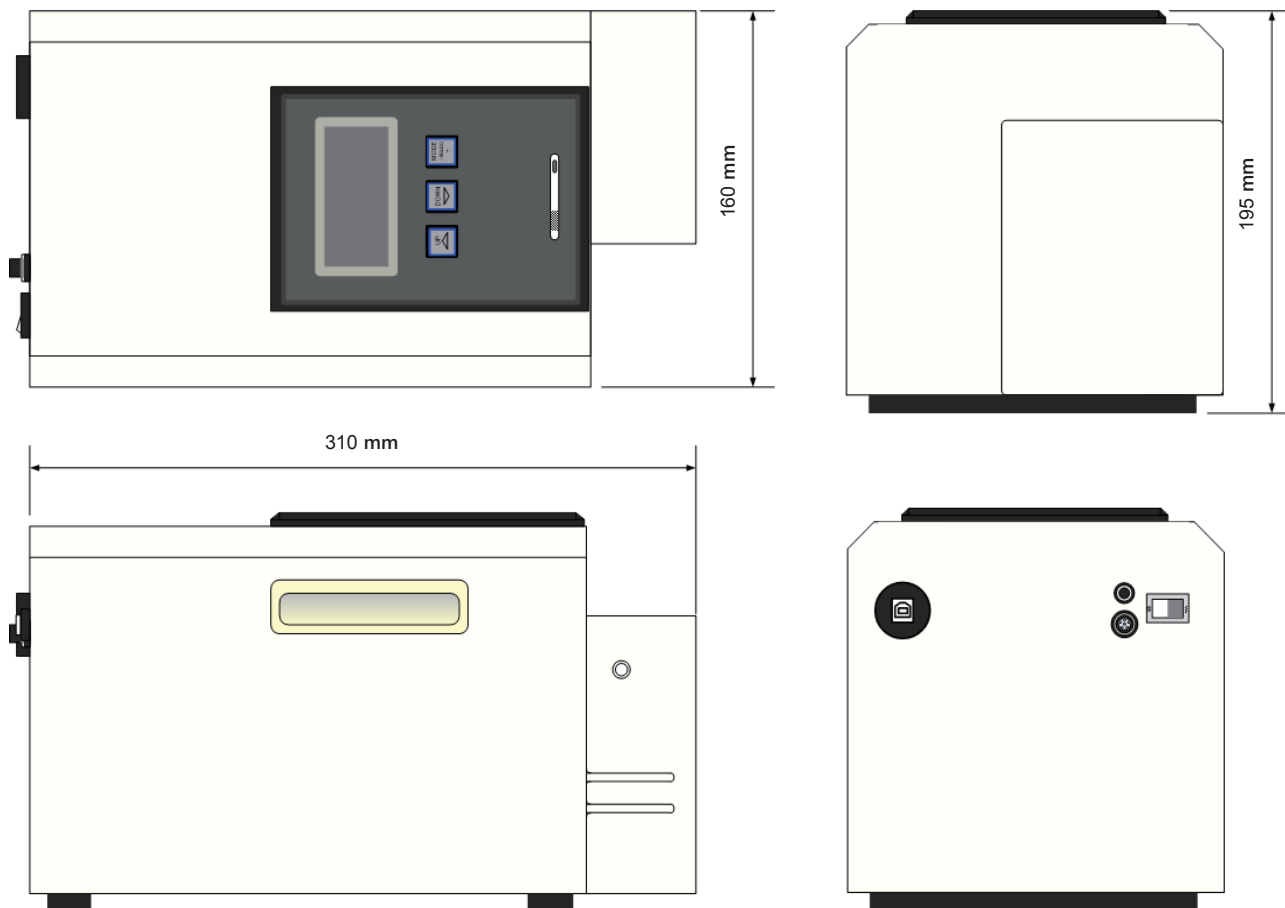
Silicon emission line in 0.5mol/L KOH



Calibration curve of 0-25µg/L cadmium



Stability of continuous analysis 500µg/L cadmium



Specification		Accessories / Consumables / Options	
Principle	LEP: Liquid Electrode Plasma, patented	Bundled accessories	
Objective	Quality/Quantity elemental analysis in liquid	AC adapter 100 - 240V (50/60Hz)	
Elements	45 element Ref: measurement range	USB cable	
Flow rate	0.2 - 1.0mL/min typically	Application CD-R LEP_Analyzer	
Cuvette	LepiCuve-SC, LepiCuve-SA (5mm x 5mm x 7mm)	for Windows 7, 8.1, 10 (32bit/64bit)	
Spectrometers	Two or one USB4000(s)	Consumables	
Power source	AC 100 - 240V ± 10%, 50/60Hz	LepiCuve-SC Cuvette with quartz	
Dimensions	310mm(L) × 160mm(W) × 195mm(H)	LepiCuve-SA Cuvette with sapphire	
Weight	4.4kg	Options	
Req. devices	Pump and personal computer	Tubing pump, Syringe pump, Watertight case	

Reference

Atomic emission spectrometry in liquid electrode plasma using an hourglass microchannel
 Yoshinobu Kohara, Yasushi Terui, Megumi Ichikawa, Kazuko Yamamoto, Toshihiro Shirasaki, Kimiyoshi Kohda,
 Tamotsu Yamamoto and Yuzuru Takamura, Journal of Analytical Atomic Spectrometry, 30, 10, 2125-2128, 2015



Micro Emission Ltd.

Address : Ishikawa Create Lab, 2-13 Asahidai,
 Nomi, Ishikawa 923-1211, Japan

Email: info@microem.co.jp

Web Site: <http://www.micro-emission.com/>